

A Ranch Broker

Allie Bear, Ranch Broker
 PO Box 1856
 Elko, NV 89803
 775-738-8534
 775-777-6416 cell

(mailto:allie@aran)

Search

[HOME \(/\)](#)

[RANCHES \(/RANCHES.HTML\)](#)

[RESIDENTIAL \(/RESIDENTIAL.HTML\)](#)

[LAND \(/LAND.HTML\)](#)

[ABOUT ALLIE \(/ABOUT-ALLIE.HTML\)](#)

[MORE...](#)

Diamond Valley Farm - Eureka, Nevada



DIAMOND VALLEY FARM
 EUREKA COUNTY, NEVADA

PRICE: \$3,780,000

2016/17 TAX: \$7,136.07

LEGAL DESCRIPTION: APN's: 007-140-05 S2 Sec. 5, Twp.22N, Rge.54E 320 Acres
 007-140-03 Lots 1,2,3,4; S2N2 Sec. 5, Twp.22N, Rge.54E 320.56 Acres
 007-140-29 E2;E2SW4;SE4NW4 Sec.8, Twp.22N, Rge.54E 440 Acres
 Total Acres: 1,080.56

ZONING: Agricultural Deferred With Residence

Nice family farm in Diamond Valley with 1,080 acres, Certificated Water Rights, and six pivots. Two metal Hay Barns, 2 feedlots, arena, loading chute, working corrals, large equipment shop with covered stalls on the side. The farm runs 350 to 400 head from May through November.

The Diamond Valley Farm sits in the valley and has great views of the Diamond Mountains. This farm has been in the family for over 45 years. There are two family homes and a third for hired help. All homes have new metal roof and siding. The Main headquarters (1801 Keg St) has a nice home with 1,800 sq. ft., 3 bedrooms, 2 bath, and a large pantry/storeroom added on. The home has natural rock foundation on the front, and a large covered deck on the front and back of the home, mature shade trees. A large 75' x 100' steel shop with covered stalls on one side sits near the road. Also located at the headquarters are two feedlots, arena, corrals, and loading chute. An older singlewide trailer is on the property that could be refurbished as a guest house.

The second home at 1851 Keg St. which is north of the headquarters, has 4 bedrooms, 2 bath with a covered front deck, shed, fenced and has mature shade trees. The third home (1740 Lariat Road on East side of the farm) is 3 bedroom, 2 bath and also has a covered front deck and mature trees, garage, and shop/equipment storage shed.

The Pivots run approximately \$2,000 each per operating months from Mt. Wheeler Power Co. There are 3 pivots of alfalfa, 1 pivot wheat, 2 pivots in permanent Fescue and Garrison where there are self-watering troughs and a stock well. The 2 grass pastures are gopher free and south of them is a large shed for farm equipment. Each metal hay barn has a 1500 ton capacity and sit north of the main headquarters on Keg St.

Video: <https://youtu.be/WOP7VBD8ngU> (<https://youtu.be/WOP7VBD8ngU>)

Click on link below to download water right information:



[dvranchwater2.pdf](#)

Download File (/uploads/1/1/1/7/11177623/dvranchwater2.pdf)

(/uploads/1/1/1/7/11177623/dvranchwater2.pdf)

Click on link below for map showing location of the Diamond Valley Farm:



etchegaray-1.pdf

Download File (/uploads/1/1/1/7/11177623/etchegaray-1.pdf)

(/uploads/1/1/1/7/11177623/etchegaray-1.pdf)

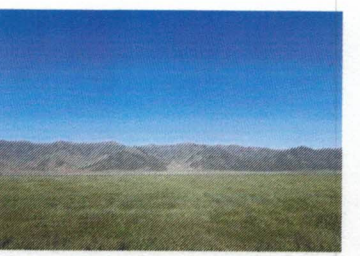
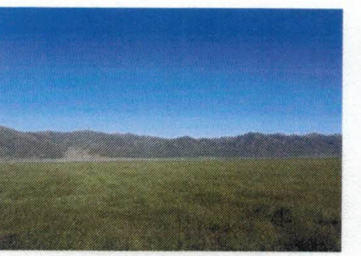
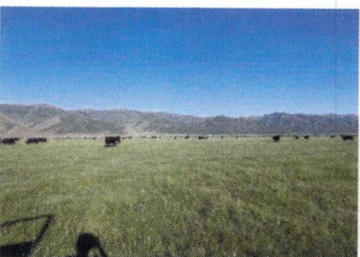
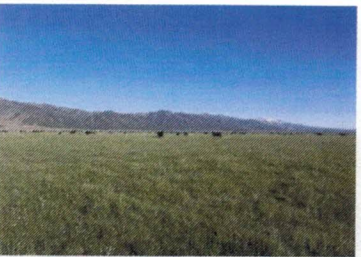
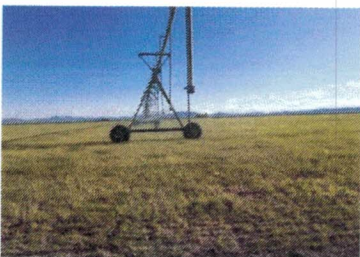
[Location on Google Maps.](#)

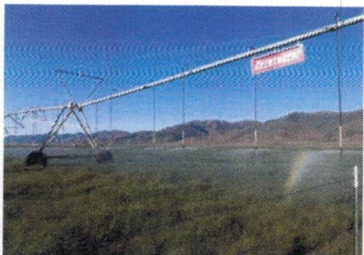
<https://www.google.com/maps/place/39%C2%B048'33.7%22N+115%C2%B055'33.6%22W/@39.8093701,-115.9282017,703m/data=!3m1!1e3!4m5!3m4!1s0x0:0x0!8m2!3d39.809366!4d-115.926013?hl=en>

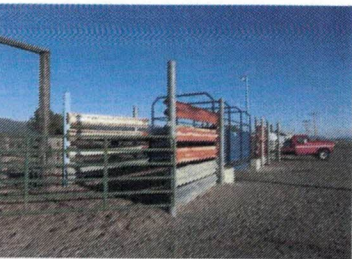
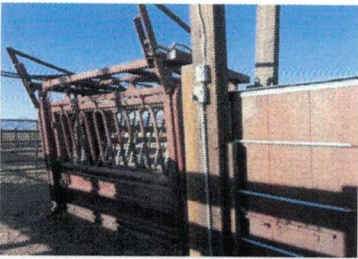


Click on photos below for larger views:



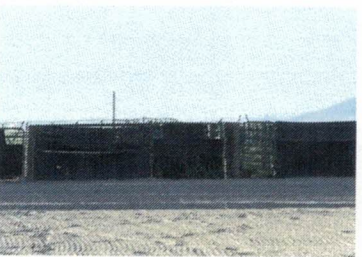




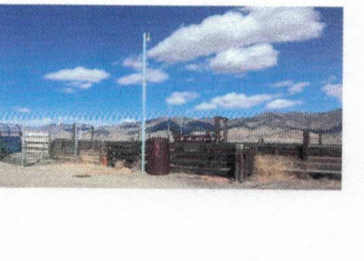
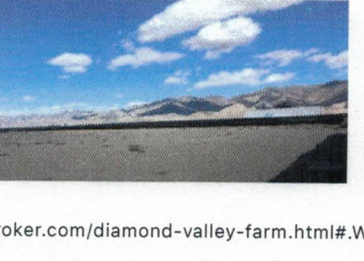
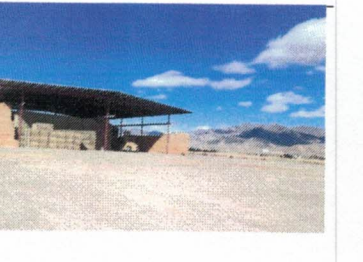
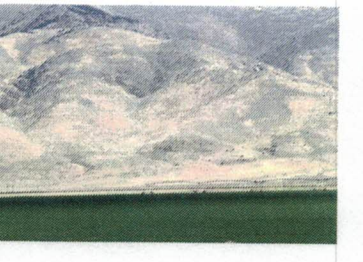
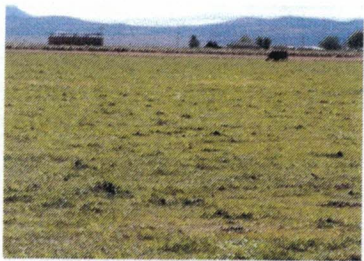


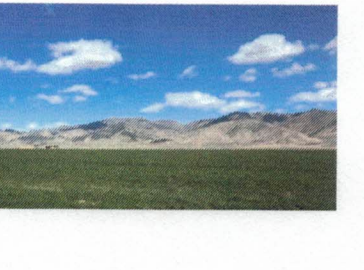
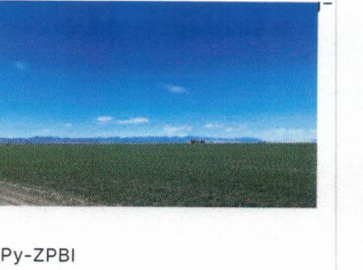
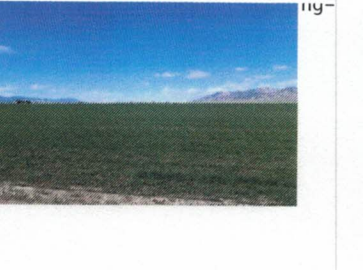
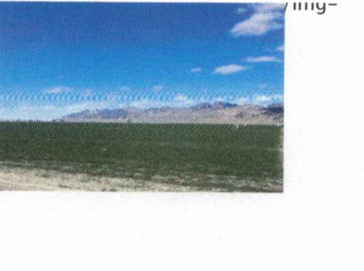
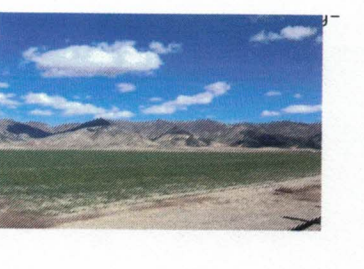
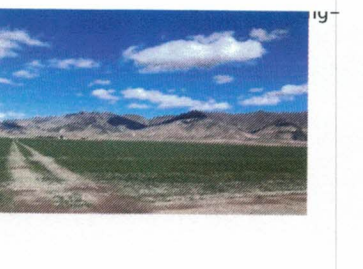
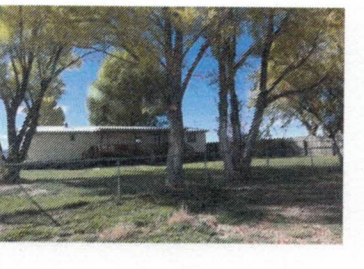
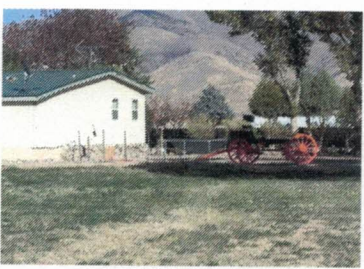
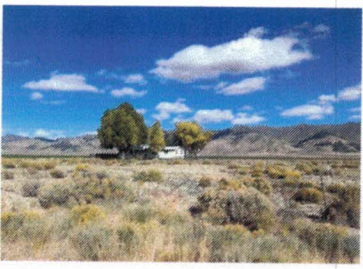
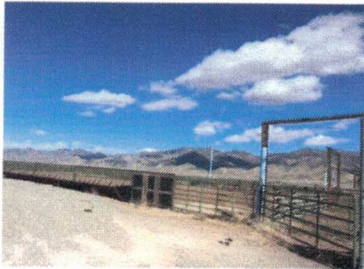


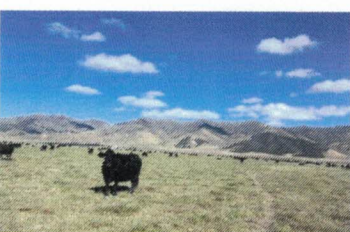
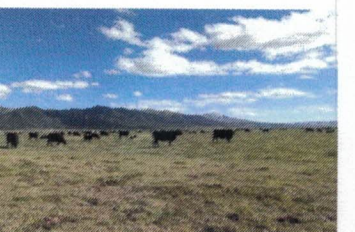
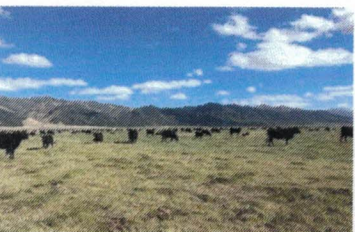
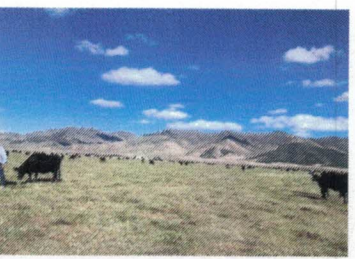
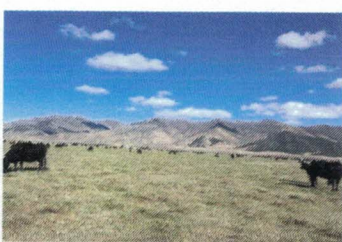
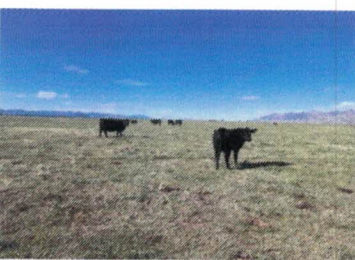
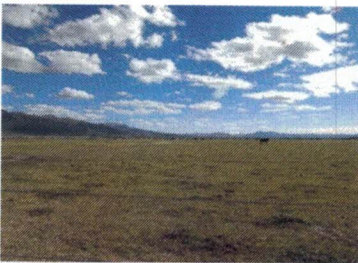
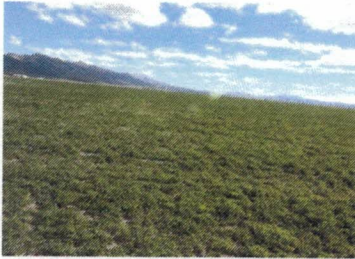
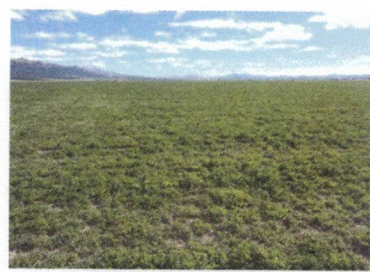


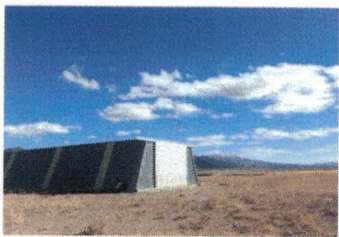




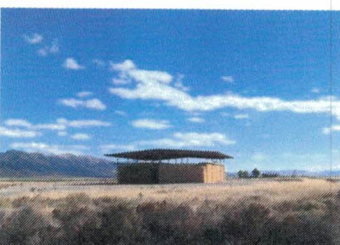








25/mly-



ly-



3/mly-



ly-



ly-

[Ranches \(/ranches.html\)](#) - [Commercial \(/commercial.html\)](#) - [Land \(/land.html\)](#) - [Residential \(/residential.html\)](#)

Contact:

Allie Bear Real Estate (mailto:allie@aranchbroker.com?
subject=Ranch+Information)
email: allie@aranchbroker.com
(mailto:allie@aranchbroker.com)
Allie Bear, Ranch Broker
PO Box 1856
Elko, NV 89803
775-738-8534

Contact:

Dawn Mitton, Realtor
Allie Bear Real Estate
www.aranchbroker.com
(http://www.aranchbroker.com/)
www.dawnmitton.com (http://www.dawnmitton.com/)
775-738-8535 office
775-934-7263 cell

775-738-9775 fax
775-777-6416 cell

(mailto:tmitton@frontiernet.net)info@dawnmitton.com
m (wmailto:mailto:info@dawnmitton.com)

(mailto:allie@aranchbroker.com)

Like 0 Tweet Share 34

Please note:

This information was obtained from sources deemed reliable but is not guaranteed by the broker. Prospective buyers should check data to their satisfaction. This property is offered subject to prior sale, price change, correction, or withdrawal. Broker expressly disclaims making any representations concerning the physical condition of, the value of, or title to any real property, personal property, or water rights, or any government entitlements (e.g. zoning) relating thereto. You are strongly encouraged to make your own independent investigation of such matters. Without limiting the foregoing, Broker advises you of the following risks for which the Broker assumes no liability: **Water Boundaries:** If the property is bounded by water, the boundary of the property may have shifted and title to the offered property may be adversely affected thereby. **Lead Based Paint:** Homes built prior to 1978 may present exposure to lead from lead based paint. A risk assessment or inspection for possible lead based hazards is recommended as is a complete home - building inspection from a qualified home inspector. **Radon:** Radon gas may present a health risk and radon testing is suggested. **Noxious Weeds:** Properties may contain noxious weeds. Government agencies may require owners to control or even eradicate noxious weeds. **Meagan's Law:** Certain sexual and violent offenders and other individuals may be required to register their addresses with government agencies from whom you may obtain such information. Buyers and sellers are advised to hire competent surveyors, lenders, 1031 exchange companies, appraisers, title companies, accountants, inspectors, and legal professionals and not rely on the Broker or any real estate agent for professional advice in these matters.

Copyright © 2004-2018 Allie Bear Real Estate

Web site design & maintenance by [Lee Raine](http://www.leeraine.com/) (http://www.leeraine.com/)